



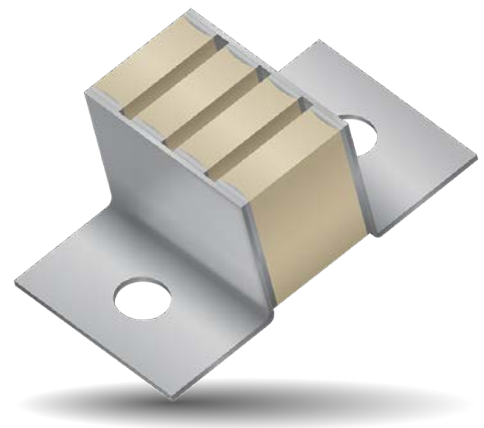
Scan QR Code For
More Information

RF POWER CAPACITOR ASSEMBLIES

GENERAL OVERVIEW

KYOCERA AVX offers leaded Power Capacitor Assemblies that extend the capacitance, voltage and current parameters of our standard multilayer ceramic capacitor product line.

These standard & custom Power Capacitor Assemblies are fabricated from PARALLEL and SERIES combinations of our industry-respected products. Customer requirements are addressed by a variety of computer matching and assembly techniques which have enabled us to extend voltage and current while lowering ESR and tolerance parameters beyond what is normally available in the industry.



BENEFITS

- Overall elements and assemblies are 100% pre-tested to customer's electrical requirements
- Combinations of capacitors pre-packaged in manageable mechanical configurations for customer specific "drop-in" applications
- Reduced inventory requirements which will eliminate excess, wasted parts
- Alleviate the need for engineering and technician resources in selecting electrically matched elements
- New price structure allows for more cost-effective assemblies
- Guaranteed electrical/mechanical performance on an assembly level
- Can "mix and match" values from our extensive inventory via computer matching programs to achieve any capacitor value specified by the designer

PERFORMANCE ADVANTAGES

- High Operating Voltage
- High Operating Current
- Extended Capacitance
- Tighter Tolerances
- High Reliability
- High Q
- Ultra-Low ESR

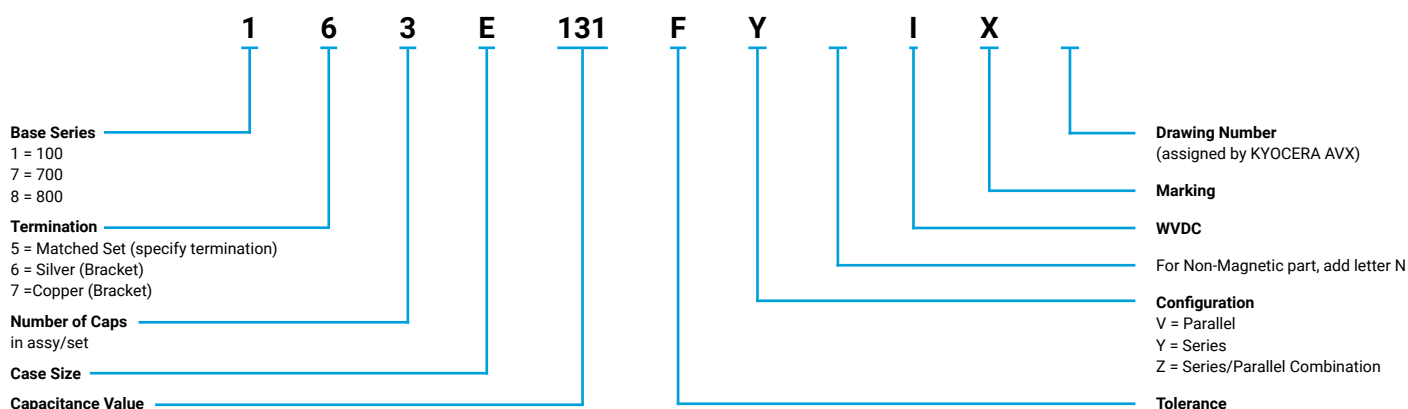
TYPICAL APPLICATIONS

- High Power RF
- Medical Electronics
- Broadcast
- Industrial Applications
- Semiconductor Manufacturing
- High Magnetic Environments
- Inductive Heating

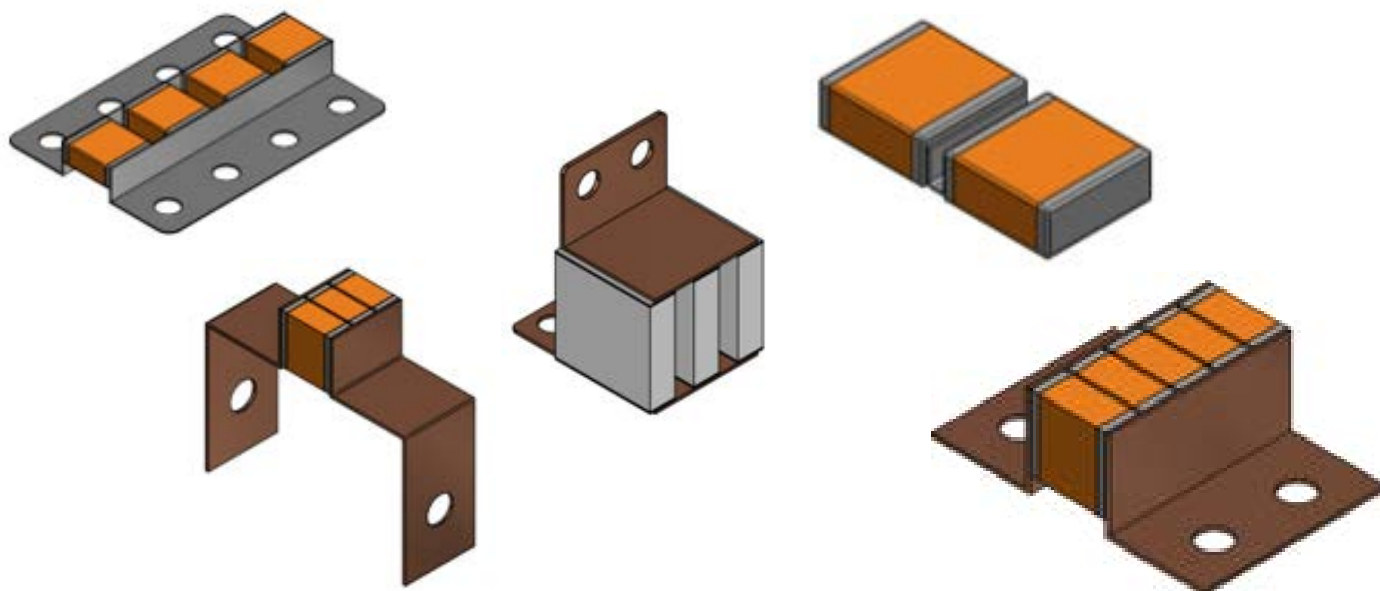
CAPABILITIES

- **Standard Assemblies:** Some configurations are ordered more frequently by customers, which allows for shorter lead times since necessary tooling is regularly available. (Finished assemblies are never stocked)
- **Custom Assemblies:** When standard assemblies can not be used, KYOCERA AVX will assist in the design of special configurations
 - **Non-Standard Values:** can mix & match capacitors from our inventory to help hit exact values
 - **Lead Material:** can choose between silver or copper leads for assemblies
 - **Non-Magnetic:** termination materials are available with magnetic immunity
 - **Unique Mounting:** choose any hole size, bends and spacing
 - **Configuration:** can come in series, parallel, or a mix of both
 - **Orientation:** horizontal and vertical orientation are available

PART NUMBER INFORMATION



Tolerance Code Table					
Code	F	G	J	K	M
Tol.	±1%	±2%	±5%	±10%	±20%



NORTH AMERICA

Mohammed Abu-Naim
 Product Marketing Manager

Email: mohammed.abu-naim@kyocera-avx.com

EUROPE

Houda Rais
 Product Marketing Manager

Email: houda.rais@kyocera-avx.com

ASIA

Dennis Hu
 Product Marketing Manager

Email: qiangqiang_hu@kyocera.com.cn